



**Rivnut**  
Fastening Systems

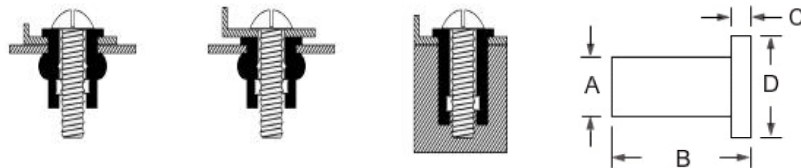
1300 887 341  
sales@rivnut.com.au  
Unit 3, 57 Boyland Avenue,  
Coopers Plains, Qld 4108

**Rubber Nut series**

**Material** E.P.D.M Rubber Body / Brass



Rubber Nuts are optimal for applications where isolation to reduce vibration and noise



Part Number	Thread	Grip Range	A	B	C	D
RNM3100	M3	0.4-4.0	8.00	12.60	1.40	11.00
RNM3250	M3	9.5-13.0	8.00	24.90	0.90	14.00
RNM4100	M4	0.4-4.0	8.00	126.00	1.40	11.00
RNM4140	M4	0.4-4.4	8.00	14.20	1.50	19.10
RNM4240	M4	8.5-15.0	8.00	24.00	1.20	11.00
RNM5150	M5	0.5-4.9	9.70	14.10	0.90	12.70
RNM5190	M5	0.8-5.8	9.70	20.90	4.70	19.00
RNM5200	M5	8.0-11.5	9.70	21.50	0.90	14.00
RNM5250	M5	7.9-15.0	9.70	26.50	1.30	14.00
RNM6150	M6	0.4-4.0	12.80	16.00	1.30	16.00
RNM6200	M6	4.7-8.7	12.80	21.10	4.75	19.00
RNM6250	M6	6.4-11.5	12.80	26.70	2.00	16.30
RNM6350	M6	11.5-23.0	13.10	35.00	1.30	16.00
RNM8200	M8	0.4-4.0	16.00	18.3	3.2	21.5
RNM8300	M8	2.0-18	18.10	30.00	2.00	20.5
RNM8500	M8	15.0-39.0	18.10	50	1.6	20.00
RNM1055	M10	19.0-40.0	20.10	56.00	1.3	22.5
RNM127	M12	38.0-64.0	24.10	78	1.3	27.00

Diagrams and Drawings are for measuring purposes only. Dimensions and specifications are subject to change without notice.  
The test data provides approximate strength values averaged in multiple tests in various materials and thicknesses.

[www.rivnut.com.au](http://www.rivnut.com.au)