



Rivnut
Fastening Systems

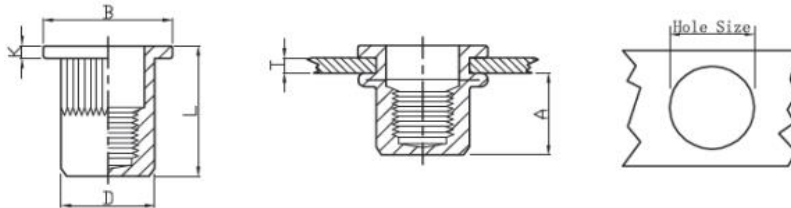
1300 887 341
sales@rivnut.com.au
Unit 3, 57 Boyland Avenue,
Coopers Plains, Qld 4108

Rivnut Large Flange Stainless Steel - Closed End

Material Stainless Steel A2
Finish Stainless Steel A2



Optimal for high push-out applications. Straight metric hole sizes. Splined body improves torque-to-turn resistance



| Part Number | Thread | Grip Range | Hole Size | D | L | B | K |
|-------------|--------|------------|-----------|-------|-------|-------|------|
| RNLFST04CE | M4 | 0.5-2.5 | 6 | 6.00 | 15.60 | 9.00 | 0.80 |
| RNLFST05CE | M5 | 0.5-2.5 | 7 | 7.00 | 17.90 | 10.00 | 1.00 |
| RNLFST06CE | M6 | 0.5-3.0 | 9 | 9.00 | 21.40 | 13.00 | 1.50 |
| RNLFST08CE | M8 | 1.0-3.0 | 11 | 11.00 | 24.45 | 16.00 | 1.50 |
| RNLFST10CE | M10 | 1.0-3.5 | 13 | 12.95 | 29.00 | 16.00 | 1.70 |

| Thread Size | Pull-Out KN | Push-Out KN | Maximum Torque NM |
|-------------|-------------|-------------|-------------------|
| M4 | 12.70 | 5.40 | 9.80 |
| M5 | 20.60 | 8.80 | 14.70 |
| M6 | 32.40 | 10.80 | 44.10 |

Dimensions and specifications are subject to change without notice.

www.rivnut.com.au