




Rivnut
Fastening Systems

Product Catalogue

Lock Bolts Rivets

 1300 887 341

 1300 889 341

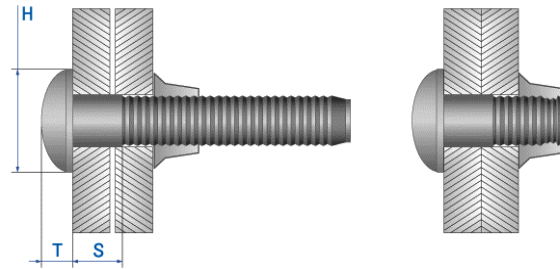
 lee@rivnut.com.au

 rivnut.com.au

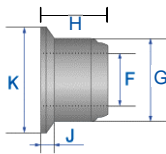


LOCK BOLT LBBS SERIES

Head Type	Brazier Head
Material	Carbon Steel
Finish	Zinc Plate



Part Number	Rivet Diameter (D) nom.	Hole Size	Shank Length(S) min.	Grip Range	Head Diameter (H) max.	Head Thickness (T) max.	Standard Strength (kN) typ.	
							Shear	Tensile
LBBS0610	4.8	5.0~5.2	2.3	1.6~15.9	10.0	3.4	8.2	10.0
LBBS0620			8.4	7.9~31.7				
LBBS0810	6.4	6.6~6.8	2.2	1.6~15.9	13.3	4.1	11.8	16.0
LBBS0820			9.1	7.9~31.7				

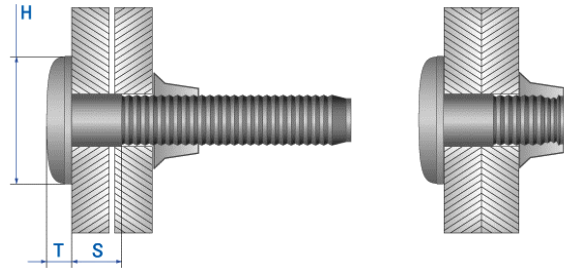


Collar Type	Flange
Material	Carbon Steel
Finish	Zinc Plate

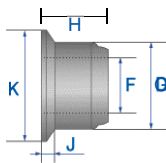
Part Number	Pin Diameter	F MAX	G MAX	H MAX	J MAX	K MAX
LBCS0600	4.8	5.0	7.9	7.2	1.6	10.0
LBCS0800	6.4	6.8	10.4	9.7	2.0	13.2

LOCK BOLT LBTS SERIES

Head Type	Truss Head
Material	Carbon Steel
Finish	Zinc Plate



Part Number	Rivet Diameter (D) nom.	Hole Size	Shank Length(S) min.	Grip Range	Head Diameter (H) max.	Head Thickness (T) max.	Standard Strength (kN) tvn.	
							Shear	Tensile
LBTS0610	4.8	5.0~5.2	2.3	1.6~15.9	11.9	2.8	8.2	10.0
LBTS0620			8.4	7.9~31.7				
LBTS0810	6.4	6.6~6.8	2.2	1.6~15.9	15.1	3.1	11.8	16.0
LBTS0820			9.1	7.9~31.7				



Collar Type	Flange
Material	Carbon Steel
Finish	Zinc Plate

Part Number	Pin Diameter nom.	F MAX	G MAX	H MAX	J MAX	K MAX
LBCS0600	4.8	5.0	7.9	7.2	1.6	10.0
LBCS0800	6.4	6.8	10.4	9.7	2.0	13.2